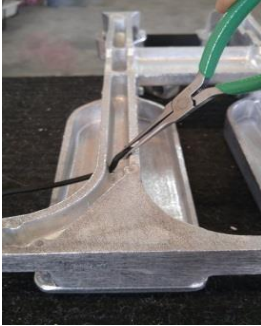


## Instructions for Replacing Pedal Retainer Elastic Cord

1. Remove the hydraulic unit and set aside
2. Turn the frame upside down so that the pedals are underneath the base
3. Locate the holes at the end opposite the axel on the base
4. Pass one end of the elastic cord through either hole from the outside going in



5. Receive the rubber cord and tie a secure knot



6. Repeat step 2 on the opposite side of the base
7. Trim excess cord so a 1/2" tail remains



1809 Airway Ave, Fort Collins, CO 80524  
contact@xiser.com



[Xiserindustries.com/instructional-resources/](https://www.xiserindustries.com/instructional-resources/)



<https://youtu.be/IZ8T5XYjrtM>